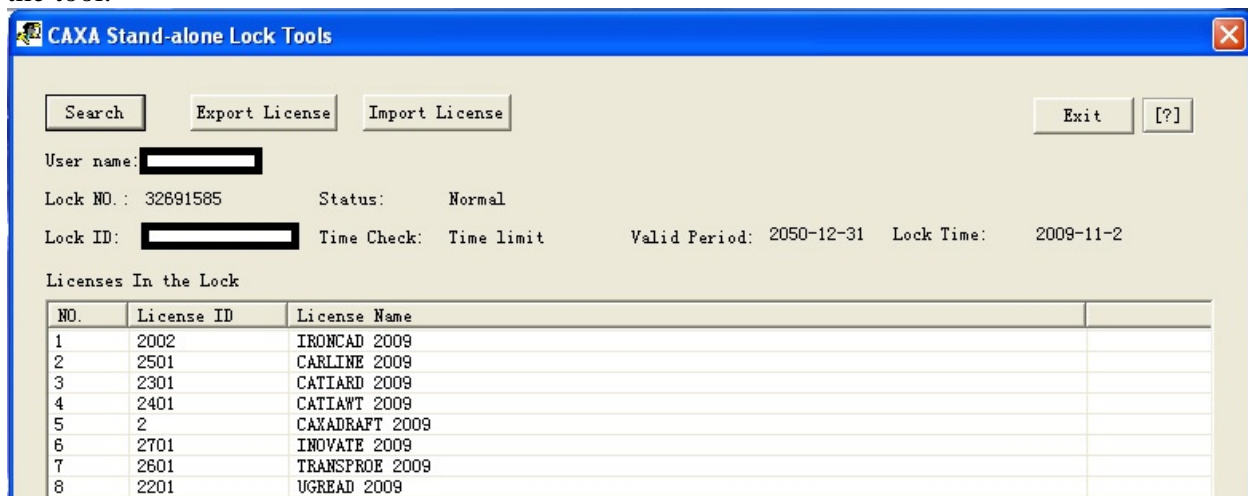


## Stand-alone Lock (Dongle) Licensing

Starting with the “version 2009 IronCAD products”, dongles will come pre-programmed with the license information already on the dongle, no activation is required. After installing IronCAD (or other product), simply plug the dongle into the USB port, wait a few seconds while Windows recognizes it and the license(s) will be available for use.

Also, the CAXA Stand-alone Lock Tool is provided by IronCAD and is used to manage a single dongle. It can be installed from the IronCAD 2009 DVD or downloaded from <http://download.ironcad.com/download/IRONCAD/2009/HardwareLicenseUtilitySetup.exe>

It is not required initially for using the dongle but is helpful in examining the contents of a single dongle or to import and export licenses to/from the dongle. The following is the image of the tool.



**Search** – The Search function refreshes the license list by re-reading the information from the dongle.

**Export License** – The Export function will “export” a license from the dongle to a file. That file can then be returned to [support@ironcad.com](mailto:support@ironcad.com) to be assigned to a different dongle (if you have more than one) or to a replacement dongle, etc.

**Import License** – The Import function can be used if you have received a new license for your dongle as in the cases listed above or, for example, if you had an IronCAD license then later purchased the PRO/E Translator license we would send you a new license file that you would “import” to the dongle.