

Network Lock Licensing

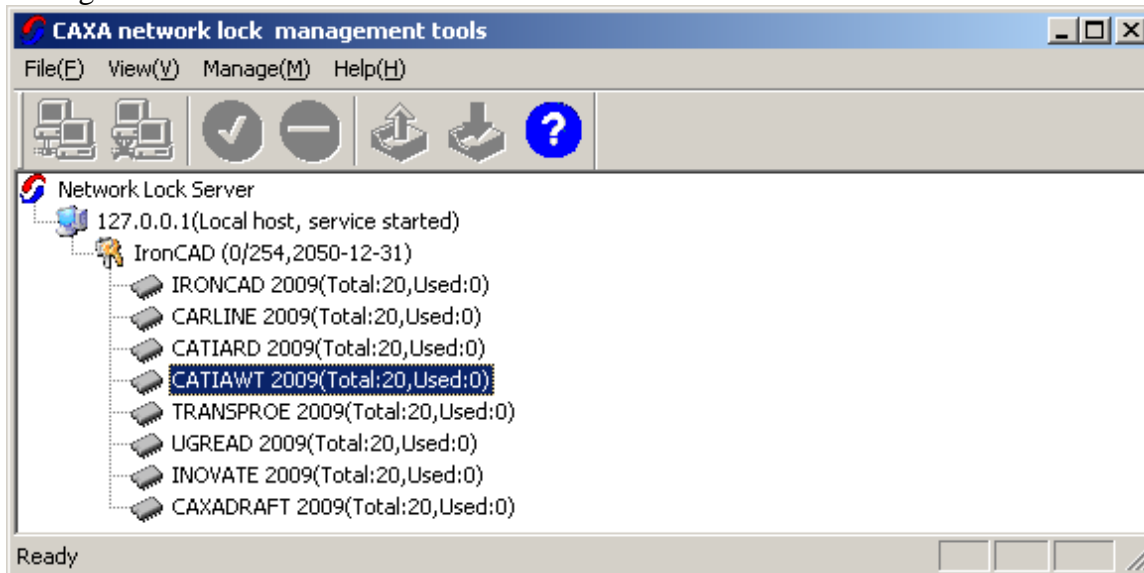
The Network Lock License is a “concurrent use” license used by organizations to allow users to share licenses across a local area network. It requires a dongle (lock) be present on the computer you choose to be your “license server computer”. All license information is stored in the dongle. The CAXA Network Lock Management Tool software is also required on the license server computer. The dongle is programmed before being shipped to customers so no activation is required. The dongle must remain plugged in on the license server computer where the CAXA Network Management Tool is running in order for licenses to be broadcast.

1.1 CAXA Network Lock Management Tool

The CAXA Network Lock Management Tool is used to manage the Network licenses. It is provided by IronCAD and is available on the IronCAD DVD or can be downloaded from <http://download.ironcad.com/download/IRONCAD/2009/NetworkLicenseUtilitySetup.exe>.

Once the CAXA Network Lock Management Tool is installed and the dongle is plugged into the USB port, start the “CAXA Network Lock Management Tool” from the CAXA/CAXA Shared Program Group. Click the “Start Service” and “Connect” buttons. (The Network Lock Management Tool is setup to start automatically when the computer boots up so these steps are only required once). At that point all licenses programmed on the dongle will be available for use across the network.

In addition to managing Network licenses, the CAXA Network Lock Management Tool can be used to check existing licenses on a Network dongle. The management functions include import and export of licenses. The following image shows the CAXA Network Lock Management Tool with some licenses installed.

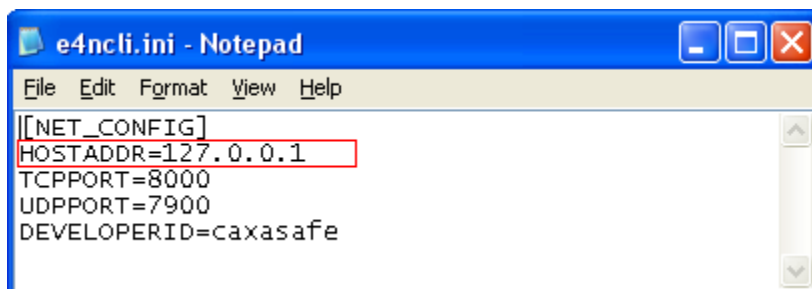


Export License – The Export function will “export” a license from the network dongle to a file. That file can then be returned to support@ironcad.com to be assigned to a different dongle (if you have more than one) or to a replacement dongle, etc.

Import License – The Import function can be used if you have received a new license for your network dongle as in the cases listed above or, for example, if you had an IronCAD license then later purchased the PRO/E Translator license we would send you a new license file that you would “import” to the dongle.

1.2 Configuring IronCAD to acquire a network license

To configure IRONCAD (or other products) to use the Network licenses, open the e4ncli.ini file from the “bin” folder of the IRONCAD installation (typically \Program Files\IronCAD) and edit the “HOSTADDR=” variable to the IP Address of the license server (the default value is localhost 127.0.0.1). The following image shows the line to be edited.



Once the e4ncli.ini file is edited and saved, IronCAD will acquire a network license (if available) as it starts up.